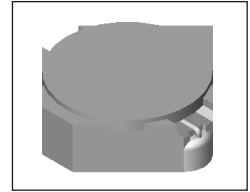


SMT Power Inductor

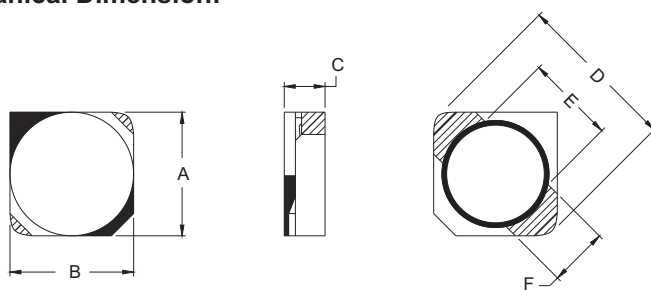
SILM730 Type

Features

- RoHS compliant.
- Low profile (3.0mm max. height) SMD type.
- Magnetically shielded, suitable for high density mounting.
- Self-leads, suitable for high density mounting.
- High energy storage and low DCR.
- Provided with embossed carrier tape packing.
- Ideal for power source circuits, DC-DC converter, DC-AC inverters inductor applications.
- In addition to the standard versions shown here, customized inductors are available to meet your exact requirements.



Mechanical Dimension:

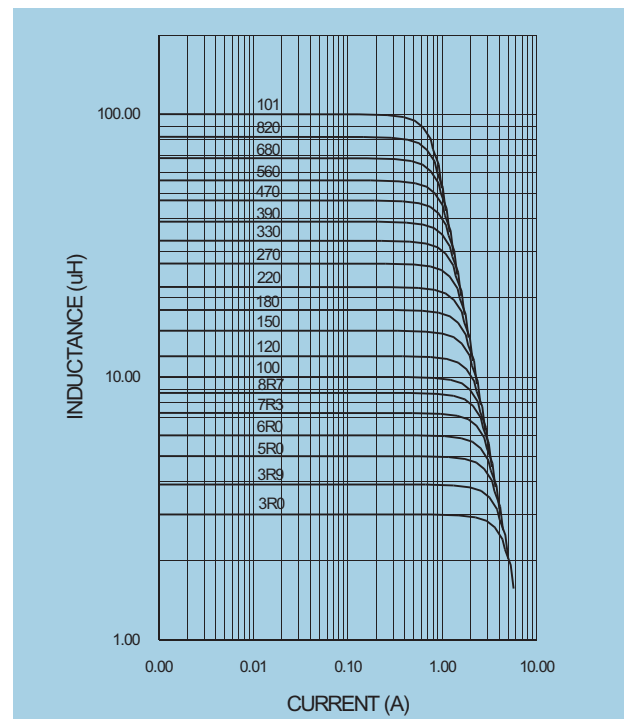


RECOMMENDED PAD PATTERNS

UNIT : mm/inch
 A = 7.0 / 0.276 Max.
 B = 7.0 / 0.276 Max.
 C = 3.0 / 0.118 Max.
 D = 8.5 / 0.335 Max.
 E = 4.8±0.3 / 0.189±0.012
 F = 3.0±0.2 / 0.118±0.008

Electrical Characteristics: 25°C: 100KHz, 0.1V

PART NO.	L ¹ (uH)	DCR (mΩ) MAX	I _{rated} ² (Adc)
SILM730 -3R0	3.0	0.024	3.00
SILM730 -3R9	3.9	0.027	2.60
SILM730 -5R0	5.0	0.031	2.40
SILM730 -6R0	6.0	0.035	2.25
SILM730 -7R3	7.3	0.054	2.10
SILM730 -8R6	8.6	0.058	1.85
SILM730 -100	10.0	0.065	1.70
SILM730 -120	12.0	0.070	1.55
SILM730 -150	15.0	0.084	1.40
SILM730 -180	18.0	0.095	1.32
SILM730 -220	22.0	0.128	1.20
SILM730 -270	27.0	0.142	1.05
SILM730 -330	33.0	0.165	0.97
SILM730 -390	39.0	0.210	0.86
SILM730 -470	47.0	0.238	0.80
SILM730 -560	56.0	0.277	0.73
SILM730 -680	68.0	0.304	0.65
SILM730 -820	82.0	0.390	0.60
SILM730 -101	100.0	0.535	0.54



1. Tolerance of inductance: ±30%.
2. I_{rated} is the DC current which cause the inductance drop less than 35% of its nominal inductance without current and the surface temperature of the part increase less than 45°C.
3. Operating temperature : -20°C to 105°C (including self-temperature rise).



DELTA ELECTRONICS, INC.

(TAOYUAN PLANT CPBG) 252, SAN YING ROAD, KUEISAN INDUSTRIAL ZONE, TAOYUAN SHIEN, 333, TAIWAN, R.O.C.

TEL: 886-3-3591968; FAX: 886-3-3591991

<http://www.deltawww.com>